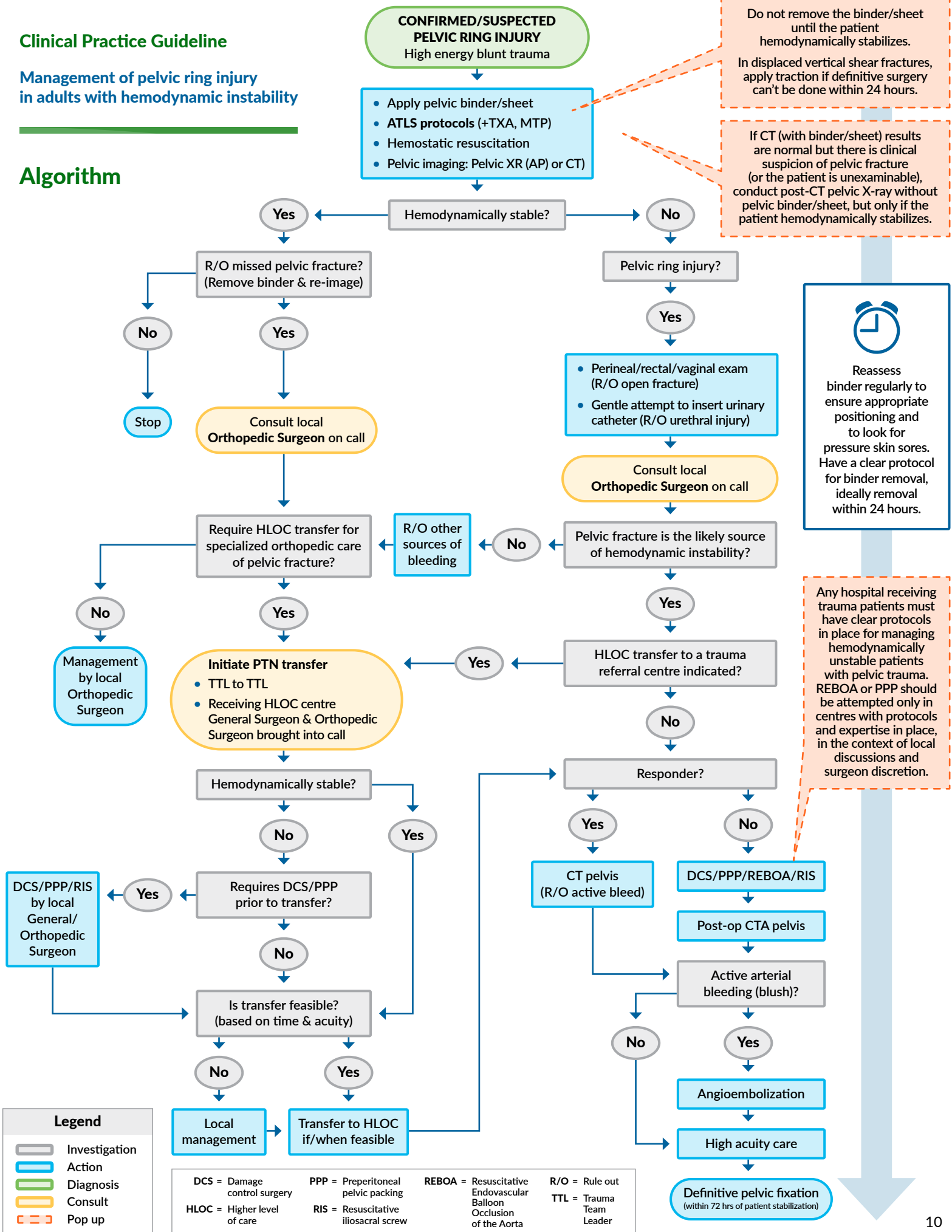


Clinical Practice Guideline

Management of pelvic ring injury in adults with hemodynamic instability

Algorithm



Legend

- Investigation
- Action
- Diagnosis
- Consult
- Pop up

DCS = Damage control surgery PPP = Preperitoneal pelvic packing REBOA = Resuscitative Endovascular Balloon Occlusion of the Aorta R/O = Rule out

HLOC = Higher level of care RIS = Resuscitative iliosacral screw TTL = Trauma Team Leader